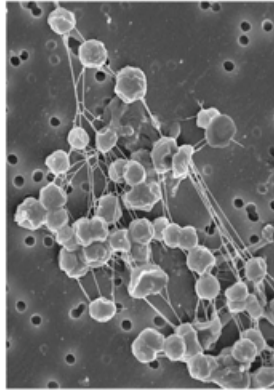


Methanogen

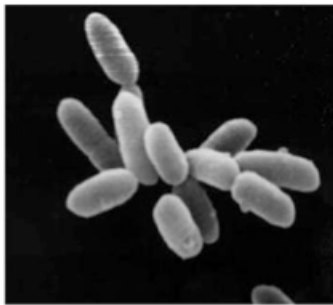
Archaea



- Made up of one cell that has a cell wall but not a nucleus
- Found in many different environments; common in wetlands and in human and animal intestines
- Moves by using a flagellum
- Metabolizes carbon dioxide and hydrogen found in its environment
- Reproduces asexually

Halobacteria

Archaea



- Made up of one cell that has a cell wall but not a nucleus
- Found in extremely salty environments
- Moves by using a flagellum
- Metabolizes amino acids found in its environment and makes its own food by photosynthesis
- Reproduces asexually

Ferroplasma

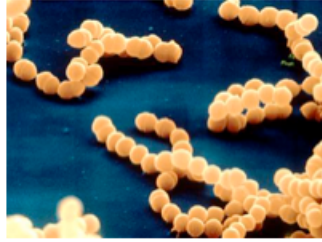
Archaea



- Made up of one cell that has a cell wall but not a nucleus
- Found in extremely acidic environments; common in mine drainage sites
- Moves by using a flagellum
- Metabolizes iron found in its environment
- Reproduces asexually

Streptococcus

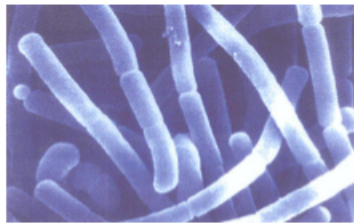
Bacteria



- Made up of one cell that has a cell wall but not a nucleus
- Found in acidic environments; common in human and animal mouths and throats
- Moves by using a flagellum
- Metabolizes sugars found in its environment
- Reproduces asexually

L. acidophilus

Bacteria



- Made up of one cell that has a cell wall but not a nucleus
- Found in warm, acidic environments, common in human and animal intestines
- Moves by using a flagellum
- Metabolizes sugars found in its environment
- Reproduces asexually

E. coli

Bacteria



- Made up of one cell that has a cell wall but not a nucleus
- Found in many different environments; common in human and animal intestines
- Moves by using a flagellum
- Metabolizes sugars found in its environment
- Reproduces asexually

Slime molds

Eukarya



- Made up of one or more cells; each cell has a nucleus
- Found on land, usually on plants
- Immobile
- Engulfs food particles found in its environment
- Reproduces asexually and sexually

Bonobo

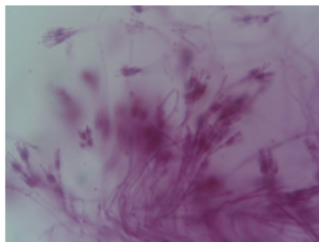
Eukarya



- Made up of many different kinds of cells; each cell has a nucleus.
- Found on land, in rainforests in Africa
- Moves by walking upright and on all fours
- Eats fruits, leaves, and small animals found in its environment
- Reproduces sexually

Penicillium

Eukarya



- Made up of many cells; each cell has a nucleus
- Found on land, often on foods and in indoor environments
- Immobile
- Absorbs nutrients from its environment
- Reproduces asexually
- Source of antibiotic penicillin